

# PRODUCT CATALOG





**At HF Agro, we are dedicated to the development and production of highly efficient agricultural machinery. Our commitment to zero maintenance and innovative engineering solutions ensures that the farmer not only benefits from superior equipment but also saves valuable time during farming.**

## **OUR MISSION**

We provide farmers with a comprehensive range of functional and dependable equipment, tailored to meet their diverse agricultural needs. From soil preparation to crop protection and nutrition, our wide array of products is designed to empower the modern agricultural enterprise.

## **TAILORED SOLUTIONS FOR EVERY FARMER**

At HF Agro, we pride ourselves on delivering exclusive solutions to every farmer. Our machinery is thoughtfully adapted to local conditions, considering the unique soil and climate characteristics of each region and the specific needs of each farm. The result is high productivity, reduced operating costs, and exceptional tillage quality.

## **INNOVATION AT OUR CORE**

In our pursuit of excellence, HF Agro remains committed to innovation and the creation of new, tailor-made products to serve the individual needs of farmers. We understand that the agricultural landscape is constantly evolving, and we stand ready to provide farmers with the best machinery available. Our aim is to be a trusted and reliable partner to our customers as we navigate the ever-changing demands of modern farming.



# GEKON

## SHORT DISK HARROWS



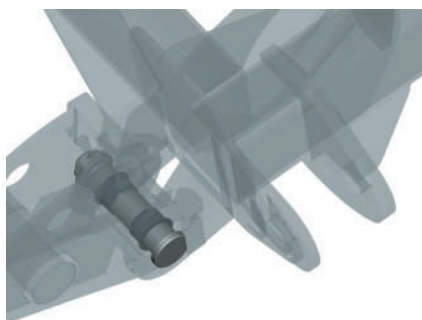
2,75 - 9,25 m



from 100 hp



up to 20 km/h



## ZERO MAINTENANCE

### GEKON IS MAINTENANCE -FREE

Due to securely sealed bearing assemblies and high-quality plain bearings used in every hitched connection, GEKON disk harrows do not have any lubrication points.

*There is no need to purchase lubricants or spend time to maintain the unit. All you need to start working is to adjust the tillage depth!*

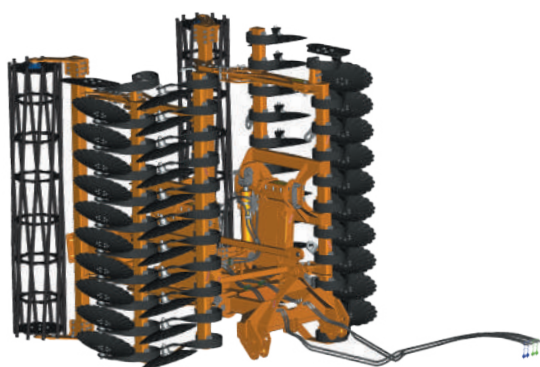


### EASY TRANSPORTATION

Due to the special arrangement of working tools, the working width of GEKON-3 suits for transport width of 3 m without the additional folding of the outermost racks.

### MULTI-PURPOSE ATTACHMENT SYSTEM

The attachment system is adapted to categories 2 and 3 three-point hitch, and is supplied complete with all the necessary components.



### UNIQUE POSSIBILITY TO CONVERT THE HARROW TO THE HINGED DESIGN

The central frame of GEKON-5 and 6 is equipped with the integrated adapter for category 3/4N three-point hitch that allows you to use the unit in the hinged design, after detaching a hitch frame and a running gear.

*Use GEKON in any attachment configuration!*



### HYDRAULIC ADJUSTMENT OF THE HITCH FRAME POSITION

The unit's horizontal position is adjusted by means of the hydraulic cylinder of a hitch frame with the remote plates built into the frame.

The position of the front row of discs relative to the rear row on the GEKON-9 is hydraulically regulated.

*All this simplifies the process of setting up the machine - you spend a minimum of time setting it up. There is no need to adjust the hydraulic cylinder rods. You won't have to physically force or lose the spacer clips in the field.*

# QUALITY OF WORK



## HIGH-QUALITY TILLAGE AND ECONOMY THANKS TO MODERN SPRING TINE

Arrangement of each disk on an individual spring tine of GEKON disk harrows provides maximum protection of the bearing assembly, therefore the unit is not afraid of single obstacles in the field.

Also, the spring tines ensure impeccable quality and uniformity of tillage, while reducing the traction resistance of the implement (thus saving fuel).

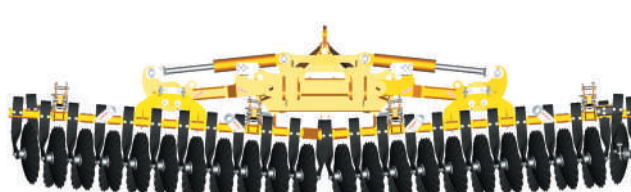
*Due to the spring tine, your GEKON works faster, with better quality and more reliably!*



## ROLLERS THAT DON'T GET CLOGGED

The rod-cage roller with a diameter of 400 mm does not have a central pin, and the optional tubular-cage roller with an increased diameter of 500 mm ensures reliable maintenance of the unit's working depth even on light soils.

Absence of a central pin makes the roller resistant to clogging in moist soil conditions and extremely contaminated field.



## INNOVATIVE CONTOUR FOLLOWING SYSTEM - TILLAGE WITH SINGLE DEPTH

The contour following system with centrally suspended working sections evenly distributes weight of the unit along its whole working width, thus enabling the even depth of tillage. The use of rubber dampers in the system allows for additional pressure at the edges of the half-frames when following the field contour on uneven sites.

The terrain copying system in GEKON-9 has the possibility of free pumping of the wings in the transverse plane, which allows to process fields with complex terrain despite the width of the machine.

*Therefore, not only does the unit follow the field's contour, it also levels its surface!*



## AUTOMATIC LOCKING OF THE UNIT IN THE TRANSPORT POSITION

The operator neither need to leave the tractor cab, nor pay attention to locking/unlocking the transport latches during folding/unfolding of the unit.



## UNFOLDING SYSTEM WITH HYDRAULIC PROTECTION

Availability of additional protective elements in the hydraulic system will prohibit an operator from violating the folding/unfolding sequence of the unit.

*Unproductive time spent during the operation of the unit is thus reduced. The possibility of an operator's error in removing the latches and corresponding unit damage is eliminated.*

## TECHNICAL DATA

	GEKON-3	GEKON-4	GEKON-5	GEKON-6	GEKON-8	GEKON-9
Working width, m	2,75	4	5,25	6,25	8,25	9,25
Tractor's required power, hp	From 100	From 130	From 150	From 170	From 250	From 300
Attachment to the tractor	hinged		semi-towed			
Weight, kg	1270	1669	3988	4402	8250	8750
Number of disks	22	32	42	50	66	74
Disk diameter, mm	568					
Number of hydraulic pairs	-		2		4	
Depth of cultivation, cm	3-12		3-15			
Working speed, km/h	Up to 20					
Overall dimensions in transport position (LxWxH), mm	2489 x3000 x1700	2489 x4402 x1700	5612 x3000 x3324	5612 x3000 x3824	6750 x3000 x3360	7250 x3000 x3360



# SWIFT DRAG HARROW



12 - 18 m



from 135 hp

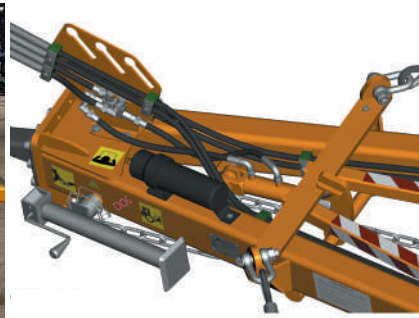


up to 15 km/h



### EASY ASSEMBLY EVEN FOR ONE PERSON

The adjustable drawbar allows one operator to easily convert the unit from the working position to the transport position.



### HYDRAULIC LOCKING AND CONVENIENT OPERATION

Locking of the cable support in the working position is carried out with the help of hydraulics from the tractor cab, thus reducing time spent for folding or unfolding the unit.

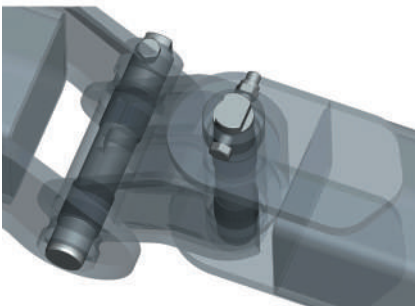
The operator does not have to leave the cab to carry out this operation.



### HYDRAULIC CONTROL OF TRANSPORT WHEELS

Hydraulic rotation of the transport wheels of the side frames is available at the customer's request, which greatly simplifies and speeds up the process of unfolding the unit in the field.

The unit can be quickly and easily unfolded without getting the rotational transport wheels jammed.



### "ZERO MAINTENANCE"

The unit does not require lubrication of the hinge joints after each shift, thus saving valuable time during field work and money on lubricants.



### SAFE TRANSPORTATION

The availability of large overall shields and lamps in all versions of the unit increases the safety of its transportation in the dark.

The width of the entire range of SWIFT drag harrows in the transport position does not exceed 3 m, which makes their transportation on public roads convenient and safe.

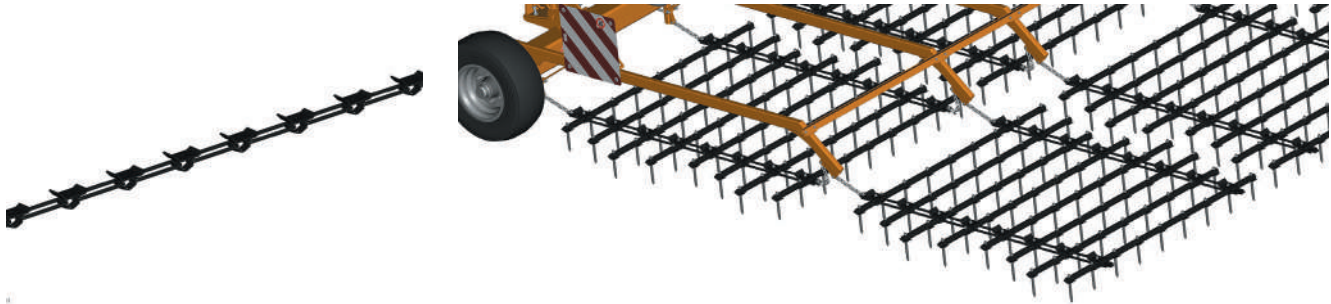


### INDIVIDUAL SET-UP OF THE WORK SECTION FOR YOUR NEEDS

The tooth can be set in two positions: aggressive and mild, depending on the direction of movement of the working section, which allows for tilling the soil under different working conditions to a depth of 3 to 8 cm.

The diamond cross-section of the tooth, in comparison to the standard square or round cross-section, reduces the load on the tractor drawbar, while ensuring all technological operations.

THE FRAME OF SWIFT DRAG HARROW IS LOCATED CLOSER TO THE GROUND, WHICH ALMOST ENTIRELY PREVENTS ITS DEFORMATION DURING WORKING WITH OVERLOAD.



## RELIABLE ONE-PIECE CHAIN ENSURES UNINTERRUPTED WORK

The welded construction of the chain of the working section excludes its breaking during operation of the unit in case of destruction of the connecting bolt: the unit will not lose its operational state and will not require an immediate stop in the middle of the field.

## VERSATILE TWO-SECTION DRAG FOR YOUR AGRONOMIC TASKS

Each 16-row drag consists of two parts of 8 rows each, which can be installed separately, if necessary. This solution also reduces the load on the chains of the front part of the drag.

The design of the working section, which resembles a flexible carpet, as well as the suspension of the section on chains, enables the unit to work efficiently on the field with complex contour.

SWIFT DRAG HARROWS ARE EQUIPPED WITH CONVENIENT AND RELIABLE SIMOL SUPPORTS.

## TECHNICAL DATA

	SWIFT-12	SWIFT-15	SWIFT-18
Working width, m	11,96	14,26	17,94
Tractor's required power, hp	From 135	From 160	From 240
Attachment to the tractor	Semi-towed		
Weight, kg	4170	4701	5538
Working speed, km/h	8-15		
Overall dimensions in transport position (LxWxH)	10790x 2994x 3500	11380x 2994x 3500	13170x 2994x 3500
Overall dimensions in working position (LxWxH)	10300x 11986x 1066	10300x 14400x 1066	10300x 17966x 1066
Teeth rows	16		
Tooth cross-section	Diamond		



# ROTARY HARROWS



3-18 m



30 h.p.



up to 20 km/h



**SURFACE LOOSENING AND AERATION OF THE SOIL  
DESTRUCTION OF FILAMENTOUS SHOOTS OF WEEDS**

- The HF Agro rotary harrows allow to perform a number of different tasks for professional tillage.
- HF Agro rotary harrow is designed for post-emergence harrowing of field crops - grain, tilled, technical.
- Harrows can be used for cultivation of row spacings of corn and sunflower, seed crops with a row spacing of up to 70 cm.



- The unit effectively and evenly loosens the soil without damaging the plants, while destroying the weeds.
- The tool is well suited for both continuous and inter-row cultivation, has a high frame passage, which allows to process the soil, even with an already sprouted plant.
- The HF Agro rotary harrow is used on all soils and provides a high quality of processing.
- Row spacing adjustable from 10 cm
- The unit is available with a working width of 3 to 18 meters
- Aggregated with tractors from 30 hp
- The line includes wide-cutting units, which significantly increases the processing speed.
- Wide-format units are universal - if desired or if necessary (field relief, etc.), it is possible to disconnect half of the wing and get, for example, two 6-meter harrows.



### ELIMINATION OF THE RACK BREAK

The working bodies of the rotary harrow HF Agro are characterized by increased reliability.

Tension spring eliminates fracture. The tension springs have a tension screw with which the stroke of the rack can be adjusted, making it more rigid or softer.

The disks are located on a rocking yoke, which allows to completely copy the unevenness of the field, thereby increasing the processing efficiency.

The working bodies are fully adjustable.



### UNIVERSAL WORKING UNITS

Each of the fifteen teeth on the disc is secured with two bolts that pass through the disc, allowing for quick tooth replacement rather than the entire disc.

At the attachment point of the tooth, the disc is bent at an angle of 45°, which prevents the tooth from moving in different directions and makes it possible to use the unit in different conditions and soils.

### MICRO-EXPLOSION EFFECT

The tooth is spike-shaped, flattened, pointed at the end and bent at an angle, which allows the tooth to enter the soil at 90°. Scrolling when leaving the soil creates the effect of a micro-explosion. In this way, it completely destroys the crust and pulls out weeds in the thread stage.

### DOUBLE SEAL HUB BEARINGS

HF Agro rotary harrows use maintenance-free ball bearings that do not require adjustment or lubrication during their life cycle.

Modern lubricants provide reliable operation of units at temperatures from -40 to +120 C.

The bearings are extremely corrosion resistant and durable.

### WIDE APPLICATION OF COMPOSITES

The use of composite materials additionally protects the moving parts of the units.

Therefore, the service life of HF Agro harrows is much longer than that of harrows where ferrous and non-ferrous metals are used in critical units.

## TECHNICAL DATA

	HF-23103	HF-23104	HF-23106	HF-23109	HF-23112	HF-23114	HF-23118
Working width, m	3	4	6	9	12	14	18
Productivity, ha/h	min 3,1	min 4,4	min 9	min 9,9	min 18	min 21	min 27
Operating speed, km/h	min 15	min 15	min 15	min 15	min 20	min 20	min 20
Cultivation depth, mm	30-50	30-50	30-50	30-50	30-50	30-50	30-50
Number of toothed discs, pcs	28	40	60	86	118	138	178
Working bodies diameter, mm	500	500	500	500	500	500	500
Weight, kg	510	680	1350	2000	до 3900	до 4500	до 5900
Minimum required tractor power from, hp	30	30	30	30	30	30	30
Overall dimensions in working position (length x width x height), mm	1800 x 3000 x 1200	1800 x 4000 x 1200	1800 x 6000 x 1200	1800 x 9000 x 1200	8800 x 12200 x 1200	8800 x 14200 x 1200	11000 x 18200 x 1200
Overall dimensions in transport position (length x width x height), mm	2000 x 3000 x 1200	2000 x 4000 x 1200	2000 x 3000 x 2700	2000 x 4400 x 4100	8100 x 3600 x 2450	8100 x 3600 x 2450	10300 x 3600 x 2450



# INTER-ROW CULTIVATORS. LIQUID FERTILIZER APPLICATORS



6,4 - 12,4 m



80 h.p.



3 - 10 cm

# THE INTER-ROW CULTIVATOR HF AGRO



Inter-row cultivator HF Agro series HF-215 with changeable row spacing from 30 to 75 cm are designed for inter-row cultivation of a wide range of crops: corn, sunflower, soy, sugar beets, peas, beans, etc. Also, the cultivators perfectly work on very wet soils without clogging its blades.

One of the additional options is to equip the cultivators with high-precision liquid-fertilizers and plant-protection injection systems.



## WORKING TOOLS

The working tools include: 32x12 mm spring tines equipped with 150 mm/ 200 mm wide duckfoot grips.

Upon request the unit can be equipped with 250 mm wide grips or 55 mm wide chisel grips.



## SPRING TINE BENEFITS

The spring tine ensures:

- reduction of the draft resistance and fuel consumption by at least 20%;
- uniform cultivation depth due to the prevention of the entire unit deepening when hitting an obstacle;
- self-cleaning of the working tools during the work process, which allows to work effectively on wet soils.



## CULTIVATION DEPTH ADJUSTMENT

Parallelogram depth maintaining on each row.

Setting of the working depth with an adjustable spindle.



## ADDITIONAL SOIL LOOSENING

For additional loosening in the middle of the rows or sowing strips, the cultivators are additionally equipped with sections with a finger-type hoe.



## PLANTS PROTECTION FROM CUTTING

The automatic adjustment system with iron (or rubber) tracing wheels allows the cultivators to accurately follow the tractor and carry out cultivation very close to the rows without "cutting" the plants.

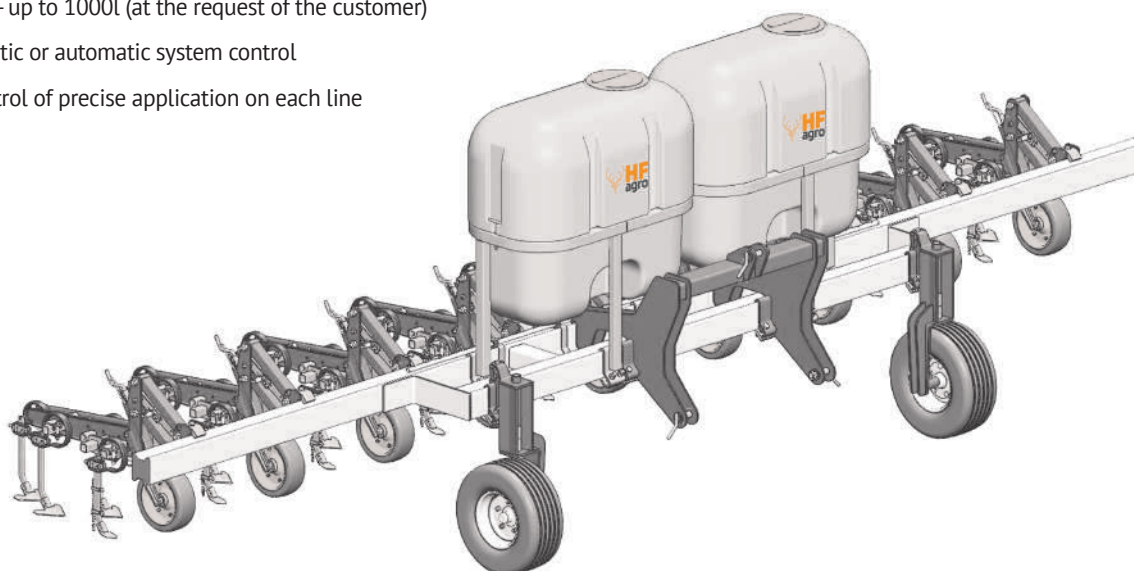


## POSSIBILITY OF SIMULTANEOUS FEEDING

As an additional option, it is possible to install HF Agro modules for fertilization on the inter-row cultivators.

The HF Agro liquid fertilizer application system is a complex of innovative equipment that makes it possible to accurately apply liquid fertilizers directly to the zone of its effective action simultaneously with inter-row cultivation and weed control.

- 12V power supply from the tractor battery
- tank volume - up to 1000l (at the request of the customer)
- semi-automatic or automatic system control
- optional control of precise application on each line



### HF AGRO APPLICATOR CAN BE INSTALLED:

- On seeders for applying liquid or bacterial fertilizers simultaneously with sowing;
- On inter-row cultivators for feeding plants simultaneously with mechanical weed control.

## TECHNICAL DATA

	HF-2159/08	HF-2159/12	HF-2159/16
Number of rows to be processed, pcs.	8	12	16
Working width, m	6,4	6,4	12,4
Tractor power, hp	min 80	min 80	min 120
Coupling with tractor	mounted	mounted	semi-mounted
Working speed, km/h	8-10		
Weight, kg	1200	1550	4500
Number of working sections, pcs.	9	13	17
Inter-row distance, cm	70	45	70
Distance from support area to the bottom area, mm	640		
Productivity, ha/h	6	6	12
Cultivation depth, cm	3-10		
Ground clearance, mm	min 300		
Overall dimensions in work position (length, width, height), mm	1700 x 3000 x 1800	1700 x 3000 x 1800	7200 x 3000 x 2400

# LIQUID FERTILIZER APPLICATORS



HF Agro liquid fertilizer applicator is an innovative product that precisely applies fertilizer directly to the seedbed or any other areas needed.

HF Agro applicator can be easily set on both cultivators and seeders, regardless of the unit manufacturer. The fertilizer tank is installed on the frame of the unit without welding.

**Installation of applicators on 8, 12, 16 and 24 row-crop drills, grain seeders with working width up to 6m, as well as any inter-row cultivators.**

- Easy installation on the unit without any welding.
- The volume of the applicator tank is from 500 to 3000 L.
- Feed lines with the introduction of working fluid can be laid (by agreement with the client) under the tine, into the Keeton, into the opener, etc.).

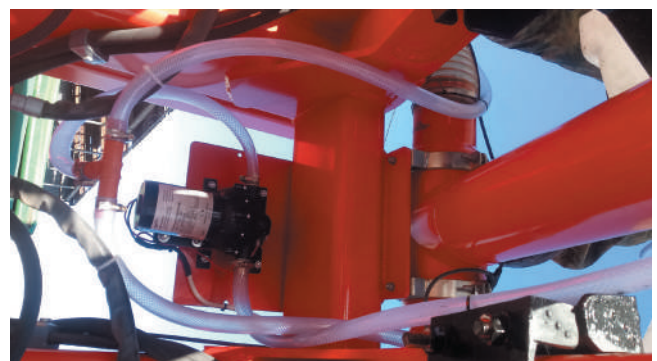
## AVAILABLE OPTIONS:

- Option: Control of each section with indication on the monitor in the tractor cab
- Option: Automatic maintenance of the preset outflow rate regardless of the tractor speed (using the built-in GPS sensor)
- Option: Doubling the application rate with automatic maintenance of the preset overflow rate regardless of the tractor speed.



Installation of the fertilizer tank is carried out on the frame of the implement without welding.

All units and parts of the equipment are made of materials resistant to aggressive liquids.



The system includes a tank, all wiring and fluid supply system, as well as a flow control system.



# SPRING TOOTH HARROWS



6 - 24 m



up to 15 km/h



max 20 ha/h

## HF-261X SERIES SPRING TOOTH HARROWS – A TRUSTED AND A RELIABLE



Our HF-261X series spring tooth harrows are renowned for their simplicity, high reliability, and cost-effective operation.

Often referred to as the «mechanical herbicide,» these versatile units play a pivotal role in minimizing herbicide use.

The HF-261X series spring tooth harrows excel in various critical agricultural processes, including:

### PRESERVING MOISTURE

In the early spring, these harrows are invaluable for sealing in moisture within the soil, contributing to optimal growing conditions.

### WEED CONTROL

Our harrows excel at harrowing fallow fields and young seedlings to eliminate weeds during their initial growth stages, commonly referred to as the «white thread» phase.

### PRE-SOWING PREPARATION

They are ideal for pre-sowing soil preparation, breaking through crusts, enhancing soil aeration, and achieving uniform soil levels to set the stage for successful planting.

### FERTILIZER APPLICATION

The HF-261X series harrows are your trusted partners for the precise application and incorporation of mineral fertilizers, ensuring that nutrients are distributed where they are needed most.

- Our HF-261X series tooth harrows are synonymous with high productivity, allowing for greater cultivation in less time compared to other manufacturers' harrows. These exceptional units can cultivate up to 300 hectares per day while maintaining minimal fuel consumption (as low as 2 liters per hectare).
- Crafted from robust manganese alloy steel, these harrows achieve increased strength without adding unnecessary weight. The vibrating teeth, constructed from  $\varnothing 7/10$  mm spring wire, are adjustable in terms of their inclination angle. This flexibility enables both high-quality soil loosening and effective harrowing of fallow fields, as well as gentle treatment of seedlings without harm to the cultivated plants.
- Operated by a single driver, these harrows boast a compact transport width, ensuring practicality and ease of use.

## TECHNICAL DATA

	HF-26106X	HF-26109X	HF-26112X	HF-26115X	HF-26118X	HF-26124X
Working width, m	6	9	12	15	18	24
Productivity, ha/h	5	7,5	10	12.5	15	20
Number of spring harrows, pcs.	4	6	8	10	12	16
Number of working tools (spring tines), diameter 10 mm/7 mm pcs.	80/120	120/180	160/240	200/300	240/360	320/480
Total weight, kg	790	1160	1900	2420	2750	3650
Number of hydraulic cylinders (for transfer to transport position), pcs.	2					
Number of pneumatic wheels, pcs.	2	4	6	6	6	6
Tractor traction class, not less	1,4				2	3
Working speed, km/h	15					
Transport speed, km/h	15					
Design features	mounted	mounted	trailed			





[WWW.HFAGRO.DE](http://WWW.HFAGRO.DE)

[office@hfagro.de](mailto:office@hfagro.de)

